



DORO

REAL ESTATE

10590 WATSEEDGE LANE
WOODBURY, MN 55129

With five bedrooms on the upper level, a main floor set up for single-level living, and a finished walkout basement with wet bar, this Dancing Waters home covers every configuration a buyer could need.



- ◆ Offered at \$894,900
- ◆ Built in 2006



- ◆ 7 bedrooms + 2 offices
- ◆ 4 bathrooms
- ◆ 3-car attached garage



- ◆ 5,182 finished square feet
- ◆ HOA Dues: \$104 per month

LISTING AGENT

MIKE TRACY

mike@dororealestate.com
651-497-5904

CO-LISTING AGENT

AARON ROSELL

aaron@dororealestate.com
651-705-6312







Built for the Big Moments.

Three levels of thoughtfully designed living, anchored by one of Dancing Waters' finest pond-view lots.

BEDROOMS:
7 (plus 2 offices)

BATHROOMS: 4

PARKING:
3-car attached garage

SQ. FT.: 5,182

FEATURES: Pond views, 5 upper-level bedrooms, single-level living capable, primary suite with walk-in California Closet, dual fireplaces, wet bar, EV charger, 2024 Daikin HVAC, 2022 roof, walkout basement, community pool + amenities

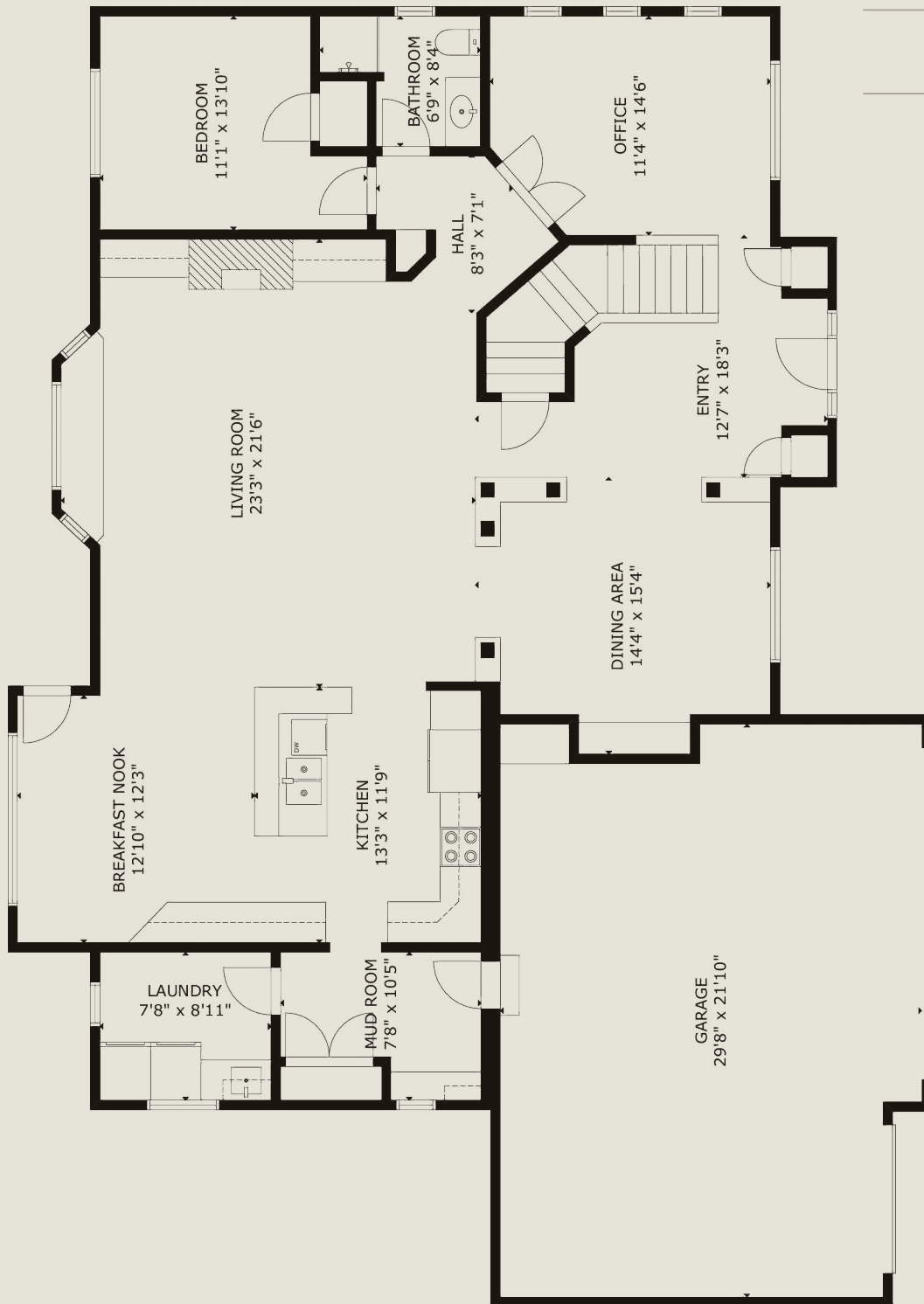
Sitting on one of Dancing Waters' most coveted pond-view lots, this 5,182-square-foot Woodbury home was built to handle a crowd and a calendar full of holidays. Seven bedrooms spread across three levels give every person a place to land: the upper level alone holds five bedrooms, including one finished with LVP flooring as a dedicated yoga retreat, plus a sprawling open-concept atrium with a built-in office setup that anchors the floor with flexibility and function. Tucked behind French doors, the primary suite delivers dual vanities, a corner-inset jetted tub, a doorless walk-in shower, a private toilet closet, and an expansive walk-in California Closet system. The main floor opens wide to the water through a bay window bench seat in the living room, while the kitchen brings granite perimeter countertops, a quartz center island, and an induction range. The main level is also fully equipped for single-level living—a bedroom, a private office, a 3/4 bath, and a mud room and laundry room with direct garage access all sit adjacent to the living, kitchen, and dining facilities. The finished walkout basement adds a second gas fireplace, a wet bar with two beverage refrigerators, and a seventh bedroom currently outfitted as a home gym with a large walk-in closet. A 2024 Daikin furnace, 2022 architectural asphalt roof, zoned



HVAC, and dedicated EV charger speak to a home that has been thoughtfully maintained with future-conscious updates. Outside, Conifer Pass Park sits directly across the pond, and the community pool, pavilion, basketball and volleyball courts, and trail network are all within easy walking distance—because a home this complete deserves a community to match.

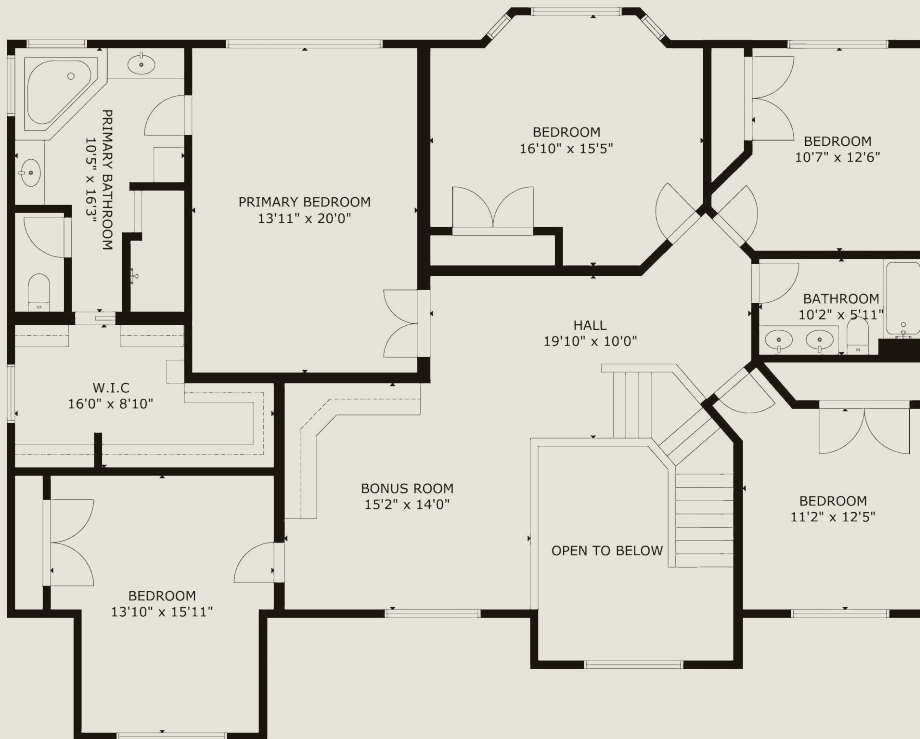


Main Floor



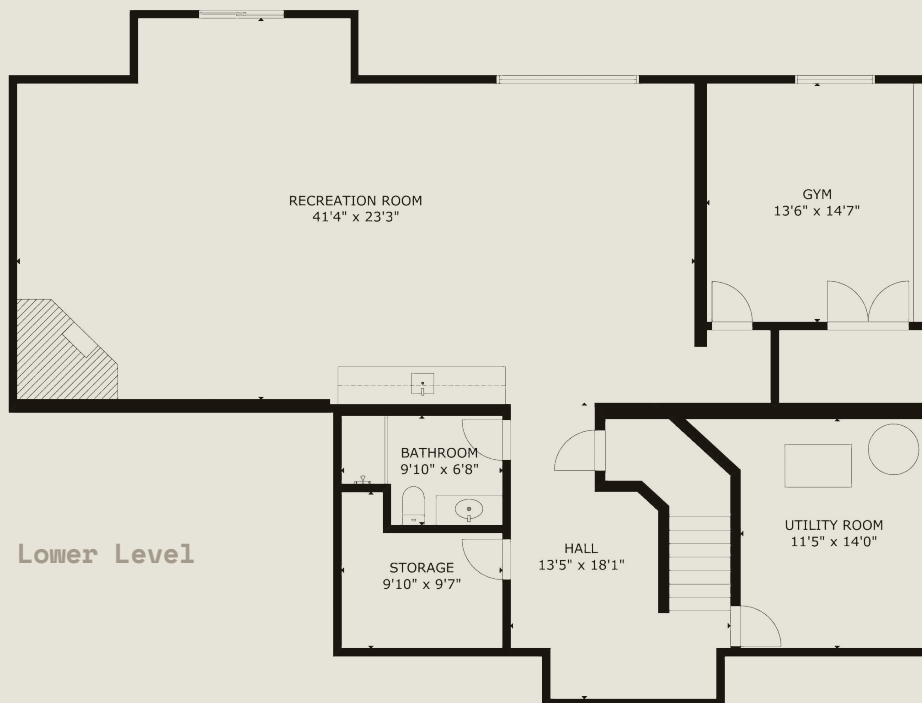
10590 WATSEEDGE LANE
WOODBURY, MN 55129

Upper Level



Upper Level

Lower Level



Lower Level



10590 WATERSEDGE LANE
WOODBURY, MN 55129

These are the current utility providers, along with estimated monthly averages as provided by the seller.



XCEL ENERGY

ELECTRICITY

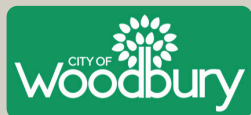
\$353 per month
(including garage EV charger use)



XCEL ENERGY

NATURAL GAS

\$50 per month



CITY OF WOODBURY

**WATER /
SEWER**

\$30 per month



FIRSTSERVICE RESIDENTIAL

**TRASH /
RECYCLING**

Included in HOA dues



XFINITY

INTERNET

\$70 per month



FIRSTSERVICE RESIDENTIAL

HOA

\$104 per month

ASSOCIATION MANAGER:
Dennis Hansen
dennis.hansen@fsresidential.com

Professional Management, Recreation Facility, Sanitation
(Trash & Recycling), Shared Amenities



10590 WATSEEDGE LANE
WOODBURY, MN 55129

MLS LISTING



Virtual Tour

For additional property details and a virtual 3D tour, please view NorthstarMLS single-family #7047852.

DORO

REAL ESTATE



Contact Us

LISTING AGENT

MIKE TRACY

mike@dororealestate.com
651-497-5904

CO-LISTING AGENT

AARON ROSELL

aaron@dororealestate.com
651-705-6312

